

## Our commitment to you and to your Child

- ~ Develop a positive self-concept.
- ~ To express thoughts and ideas.
- ~ To increase independence, critical thinking skills, and problem solving skills.
- ~ To share and take turns with one another.
- ~ To learn they are loved by God and others.
- ~ To grow emotionally, socially, physically, and spiritually.

Growing Tree Learning Center is committed to sharing Christian love with the young minds and hearts entrusted in our care.



Growing Tree Learning Center is growing and learning together in a Christian atmosphere



Growing Tree Learning Center values each child as an individual and allows learning at his/her own pace, without fear or pressure.

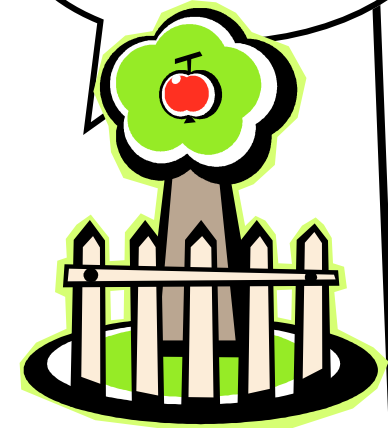
Growing Tree Learning Center encourages each child to think and act for himself/herself while also learning to live in harmony with each other.



Growing Tree Learning Center  
123 29th ST. NE  
Bemidji, MN 56601

School Phone Number: 444-4442  
School Fax Number: 444-4443  
Email: [tlcpre@paulbunyan.net](mailto:tlcpre@paulbunyan.net)

## Growing Tree Learning Center



**Jesus said, "Let the little children come to me, and do not hinder them, for the Kingdom of God belongs to such as these." (Mark 10:14)**

**Our prayer is that by growing and learning together, we will live in joy and serve our Lord.**

Trinity Lutheran Church  
123 29th ST. NE  
Bemidji, MN 56601

**218-444-4442**

# The Curriculum

A licensed teacher will provide structured learning activities for ages 16 months to 5 years old. All curriculum areas, which include: Art, Language Arts, Math, Music, Reading Readiness, Science, Social Studies and Bible stories will be introduced to the children. During work/play time the children are given the opportunity to choose activities; such as, painting, block building, puzzle centers, play dough and housekeeping. These are favorite activity centers for the children.



## Daily Activities schedule:

- ~ Arrival/Stations
- ~ Breakfast/Prayer
- ~ Circle time - theme of the week
- ~ Devotions
- ~ Art
- ~ Snack/Prayer
- ~ Outside Play
- ~ Lunch/Prayer
- ~ Story/Prayer/Nap
- ~ Snack/Prayer
- ~ Stations
- ~ Clean up/Departure

## Activities Are Designed To:

- Build self-confidence
- Develop social skills
- Introduce new ideas
- Develop vocabulary
- Develop security and success
- To explore and expand abilities of interest

## Months/Hours of Operation

Growing Tree Learning Center is opened September through May/June.

Daily hours are Monday-Friday 7:30-5:30.

## Fees and Tuition

### FULL TIME

Toddler (16 months-33 months).....  
\$160.00/week  
Preschool age (33 months-5 years).....  
\$150.00/week

### PART TIME/DROP-IN RATE

*(Only available if full time spots are not filled)*

Toddler/Preschool 4 hours or less.....  
\$17.00 a day  
Toddler/Preschool 4 hours or more.....  
\$40.00 a day

## Admission Policy

TLC Learning Center welcomes children without regard to race, color, religion, national or ethnic origin, disability, any other characteristic protected by

applicable law, or source of payment.

## Our Philosophy

Growing Tree Learning Center has been established to assist parents in their task of parenting, and children with their learning development. We use developmentally appropriate practices to guide children, which uses a wide variety of learning opportunities. It is Trinity Lutheran's desire to provide a meaningful, educational experience in a Christian environment.

Train up a child in the way he should go, and when he is old, he will not depart from it. (Proverbs 22:6)



Growing Tree Learning Center  
123 29th ST. NE  
Bemidji, MN 56601

School Phone Number: 444-4442  
School Fax Number: 444-4443  
Email: [tlcpre@paulbunyan.net](mailto:tlcpre@paulbunyan.net)